



Certificate of Analysis

CANNABUSINESS LABORATORIES, LLC

Customer:

Extract Wellness
1415 Bardstown Rd
Louisville, KY 40204

Sample ID **250221079**
Order Number **CB250221007**
Sample Name **250mg CBD FS Wildberry**

External Sample ID **EW 250mg CBD FS Wildberry**

Batch Number **51556**

Product Type **Edible**
Sample Type **Edible**

Received Date **2/24/2025**

COA Released **2/26/2025**

Comments

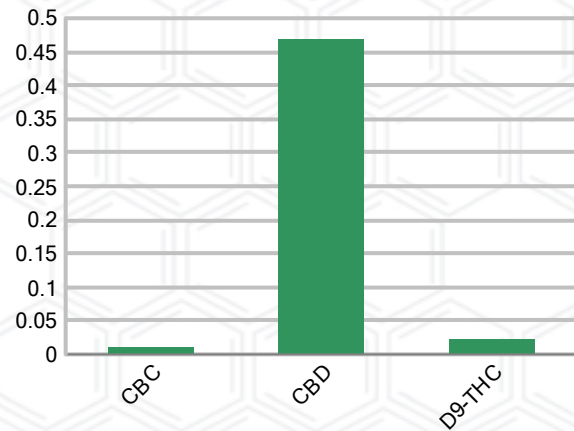
CANNABINOID PROFILE (Product Size = 1 mL)

Analyte	LOQ (%)	% Weight	mg/mL	mg/serving
CBC	0.01	0.011	0.101	0.10
CBD	0.01	0.469	4.357	4.36
CBDa	0.01	ND	ND	ND
CBDV	0.01	ND	ND	ND
CBG	0.01	ND	ND	ND
CBGa	0.01	ND	ND	ND
CBN	0.01	ND	ND	ND
d8-THC	0.01	ND	ND	ND
d9-THC	0.01	0.023	0.215	0.22
THCa	0.01	ND	ND	ND
Total Cannabinoids		0.503	4.674	4.67
Total Potential THC		0.023	0.215	0.22
Total Potential CBD		0.469	4.357	4.36
Total Potential CBG		N/A	N/A	ND
Ratio of Total Potential CBD to Total Potential THC				20.39 : 1
Ratio of Total Potential CBG to Total Potential THC				N/A

SAMPLE IMAGE



CANNABINOIDS % Weight



*Total Cannabinoids refers to the sum of all cannabinoids detected.

*Total Potential CBD = (0.877 x CBDa) + CBD. *Total Potential THC = (0.877 x THCa) + THC. *Total Potential CBG = (0.877 x CBGa) + CBG.

*Total Potential THC/CBD are calculated to take into account the loss of an acid group during decarboxylation.



SIGNATURE

Not Approved

LABORATORY MANAGER

DATE

This product has been tested by CannaBusiness Laboratories using validated testing methodologies and a quality system. Values reported relate only to the product tested. CannaBusiness Laboratories makes no claims as to the efficacy, safety, or other risks associated with any detected or non-detected levels of any compounds reported herein. This Certificate shall not be reproduced except in full, without the written permission of CannaBusiness Laboratories. Photo is of sample received by the lab and may vary from final packaging. The results apply to the sample as received.



Certificate of Analysis

CANNABUSINESS LABORATORIES, LLC

Customer

Extract Wellness
1415 Bardstown Rd
Louisville, KY 40204



Sample Name: 250mg CBD FS
Wildberry

Sample ID: 250221079

Order Number: CB250221007

Product Type: Edible

Sample Type: Edible

Received Date: 02/24/2025

Batch Number: 51556

COA released: 02/26/2025 9:42 AM

Potency (mg/mL)

Date Tested: 02/26/2025

Method: CB-SOP-028

Instrument:

0.023 %	0.469 %	0.503 %	4.674 mg/mL
Total THC	Total CBD	Total Cannabinoids	Total Cannabinoids

Analyte	Result	Units	LOQ	Result	Units
CBC (Cannabichromene)	0.011	%	0.010	0.101	mg/mL
CBD (Cannabidiol)	0.469	%	0.010	4.357	mg/mL
CBDa (Cannabidiolic Acid)	ND	%	0.010	ND	mg/mL
CBDV (Cannabidivarin)	ND	%	0.010	ND	mg/mL
CBG (Cannabigerol)	ND	%	0.010	ND	mg/mL
CBGa (Cannabigerolic Acid)	ND	%	0.010	ND	mg/mL
CBN (Cannabinol)	ND	%	0.010	ND	mg/mL
D8-THC (D8-Tetrahydrocannabinol)	ND	%	0.010	ND	mg/mL
D9-THC (D9-Tetrahydrocannabinol)	0.023	%	0.010	0.215	mg/mL
THCa (Tetrahydrocannabinolic Acid)	ND	%	0.010	ND	mg/mL



SIGNATURE

Not Approved

02/26/2025 9:42 AM

DATE

NT = Not tested, ND = Not detected; LOQ = Limit of Quantitation; <LOQ = Detected; >ULOL = Above upper limit of linearity; CFU/g = Colony forming units per 1 gram; TNTC = Too numerous to count

This product has been tested by CannaBusiness Laboratories using validated testing methodologies and a quality system. Values reported relate only to the product tested. CannaBusiness Laboratories makes no claims as to the efficacy, safety, or other risks associated with any detected or non-detected levels of any compounds reported herein. This Certificate shall not be reproduced except in full, without the written permission of CannaBusiness Laboratories. Photo is of sample received by the lab and may vary from final packaging. The results apply to the sample as received.