



Certificate of Analysis

CANNABUSINESS LABORATORIES, LLC

Customer:

Extract Wellness
1415 Bardstown Rd
Louisville, KY 40204

Sample ID **250221071**
Order Number **CB250221006**
Sample Name **1500mg CBD FS Wildberry**

External Sample ID **EW 1500mg CBD FS Wildberry**

Batch Number **51554**

Product Type **Edible**
Sample Type **Edible**

Received Date **2/24/2025**

COA Released **2/25/2025**

Comments

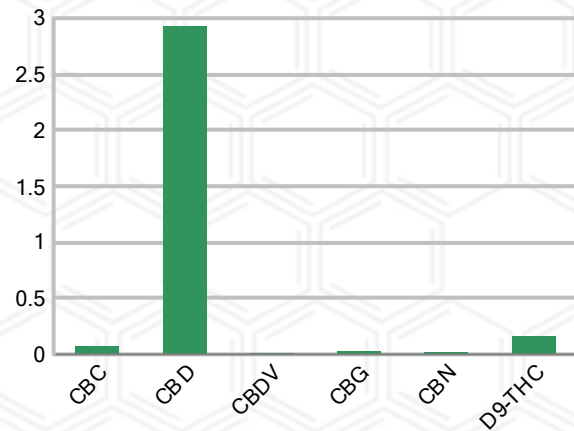
CANNABINOID PROFILE (Product Size = 1 mL)

Analyte	LOQ (%)	% Weight	mg/mL	mL/serving
CBC	0.01	0.074	0.684	0.68
CBD	0.01	2.928	27.23	27.23
CBDa	0.01	ND	ND	ND
CBDV	0.01	0.011	0.104	0.10
CBG	0.01	0.027	0.253	0.25
CBGa	0.01	ND	ND	ND
CBN	0.01	0.018	0.170	0.17
d8-THC	0.01	ND	ND	ND
d9-THC	0.01	0.159	1.478	1.48
THCa	0.01	ND	ND	ND
Total Cannabinoids		3.217	29.92	29.92
Total Potential THC		0.159	1.478	1.48
Total Potential CBD		2.928	27.23	27.23
Total Potential CBG		0.027	0.252	0.25
Ratio of Total Potential CBD to Total Potential THC				18.42 : 1
Ratio of Total Potential CBG to Total Potential THC				0.17 : 1

SAMPLE IMAGE



CANNABINOIDS % Weight



*Total Cannabinoids refers to the sum of all cannabinoids detected.

*Total Potential CBD = (0.877 x CBDa) + CBD. *Total Potential THC = (0.877 x THCa) + THC. *Total Potential CBG = (0.877 x CBGa) + CBG.

*Total Potential THC/CBD are calculated to take into account the loss of an acid group during decarboxylation.



J. Hobgood
Laboratory Manager

SIGNATURE

Jamie Hobgood

LABORATORY MANAGER

02/25/2025 11:29 AM

DATE

This product has been tested by CannaBusiness Laboratories using validated testing methodologies and a quality system. Values reported relate only to the product tested. CannaBusiness Laboratories makes no claims as to the efficacy, safety, or other risks associated with any detected or non-detected levels of any compounds reported herein. This Certificate shall not be reproduced except in full, without the written permission of CannaBusiness Laboratories. Photo is of sample received by the lab and may vary from final packaging. The results apply to the sample as received.



Certificate of Analysis

CANNABUSINESS LABORATORIES, LLC

Customer

Extract Wellness
1415 Bardstown Rd
Louisville, KY 40204



Sample Name: 1500mg CBD FS
Wildberry
Sample ID: 250221071
Order Number: CB250221006
Product Type: Edible
Sample Type: Edible
Received Date: 02/24/2025
Batch Number: 51554

COA released: 02/25/2025 11:29 AM

Potency (mg/mL)			
Date Tested: 02/25/2025		Method: CB-SOP-028	
Instrument:			
0.159 %	2.928 %	3.217 %	29.92 mg/mL
Total THC	Total CBD	Total Cannabinoids	Total Cannabinoids

Analyte	Result	Units	LOQ	Result	Units
CBC (Cannabichromene)	0.074	%	0.010	0.684	mg/mL
CBD (Cannabidiol)	2.928	%	0.010	27.23	mg/mL
CBDa (Cannabidiolic Acid)	ND	%	0.010	ND	mg/mL
CBDV (Cannabidivarin)	0.011	%	0.010	0.104	mg/mL
CBG (Cannabigerol)	0.027	%	0.010	0.253	mg/mL
CBGa (Cannabigerolic Acid)	ND	%	0.010	ND	mg/mL
CBN (Cannabinol)	0.018	%	0.010	0.170	mg/mL
D8-THC (D8-Tetrahydrocannabinol)	ND	%	0.010	ND	mg/mL
D9-THC (D9-Tetrahydrocannabinol)	0.159	%	0.010	1.478	mg/mL
THCa (Tetrahydrocannabinolic Acid)	ND	%	0.010	ND	mg/mL



J. Hobgood
Laboratory Manager

Jamie Hobgood

02/25/2025 11:29 AM

SIGNATURE

DATE

NT = Not tested, ND = Not detected; LOQ = Limit of Quantitation; <LOQ = Detected; >ULOL = Above upper limit of linearity; CFU/g = Colony forming units per 1 gram; TNTC = Too numerous to count

This product has been tested by CannaBusiness Laboratories using validated testing methodologies and a quality system. Values reported relate only to the product tested. CannaBusiness Laboratories makes no claims as to the efficacy, safety, or other risks associated with any detected or non-detected levels of any compounds reported herein. This Certificate shall not be reproduced except in full, without the written permission of CannaBusiness Laboratories. Photo is of sample received by the lab and may vary from final packaging. The results apply to the sample as received.