



# Certificate of Analysis

## CANNABUSINESS LABORATORIES, LLC

**Customer:**  
Extract Wellness  
1415 Bardstown Rd  
Louisville, KY 40204

Sample ID **250221067**  
Order Number **CB250221005**  
Sample Name **3000mg CBD FS Mint**

Received Date **2/24/2025**  
COA Released **2/25/2025**

External Sample ID **EW 3000mg FS Mint**

Batch Number **51549**

Comments

Product Type **Edible**  
Sample Type **Edible**

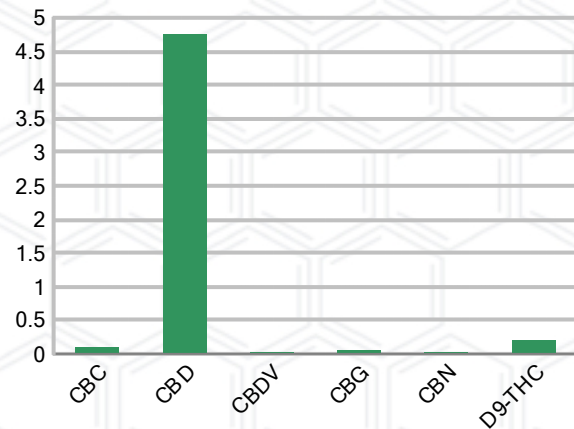
### CANNABINOID PROFILE (Product Size = 1 mL)

Analyte	LOQ (%)	% Weight	mg/mL	mL/serving
CBC	0.01	0.093	0.862	0.86
CBD	0.01	4.758	44.25	44.25
CBDa	0.01	ND	ND	ND
CBDV	0.01	0.027	0.248	0.25
CBG	0.01	0.057	0.528	0.53
CBGa	0.01	ND	ND	ND
CBN	0.01	0.028	0.257	0.26
d8-THC	0.01	ND	ND	ND
d9-THC	0.01	0.194	1.808	1.81
THCa	0.01	ND	ND	ND
<b>Total Cannabinoids</b>		<b>5.156</b>	<b>47.95</b>	<b>47.95</b>
<b>Total Potential THC</b>		<b>0.194</b>	<b>1.808</b>	<b>1.81</b>
<b>Total Potential CBD</b>		<b>4.758</b>	<b>44.25</b>	<b>44.25</b>
<b>Total Potential CBG</b>		<b>0.057</b>	<b>0.528</b>	<b>0.53</b>
<b>Ratio of Total Potential CBD to Total Potential THC</b>				<b>24.53 : 1</b>
<b>Ratio of Total Potential CBG to Total Potential THC</b>				<b>0.29 : 1</b>

### SAMPLE IMAGE



### CANNABINOIDS % Weight



\*Total Cannabinoids refers to the sum of all cannabinoids detected.

\*Total Potential CBD = (0.877 x CBDa) + CBD. \*Total Potential THC = (0.877 x THCa) + THC. \*Total Potential CBG = (0.877 x CBGa) + CBG.

\*Total Potential THC/CBD are calculated to take into account the loss of an acid group during decarboxylation.



*J. Hobgood*  
Laboratory Manager  
SIGNATURE

Jamie Hobgood  
LABORATORY MANAGER

02/25/2025 11:19 AM  
DATE

This product has been tested by CannaBusiness Laboratories using validated testing methodologies and a quality system. Values reported relate only to the product tested. CannaBusiness Laboratories makes no claims as to the efficacy, safety, or other risks associated with any detected or non-detected levels of any compounds reported herein. This Certificate shall not be reproduced except in full, without the written permission of CannaBusiness Laboratories. Photo is of sample received by the lab and may vary from final packaging. The results apply to the sample as received.





# Certificate of Analysis

## CANNABUSINESS LABORATORIES, LLC

### Customer

Extract Wellness  
1415 Bardstown Rd  
Louisville, KY 40204



**Sample Name:** 3000mg CBD FS Mint

**Sample ID:** 250221067

**Order Number:** CB250221005

**Product Type:** Edible

**Sample Type:** Edible

**Received Date:** 02/24/2025

**Batch Number:** 51549

**COA released:** 02/25/2025 11:19 AM

### Potency (mg/mL)

Date Tested: 02/24/2025

Method: CB-SOP-028

Instrument:

<b>0.194 %</b>	<b>4.758 %</b>	<b>5.156 %</b>	<b>47.95 mg/mL</b>
Total THC	Total CBD	Total Cannabinoids	Total Cannabinoids

Analyte	Result	Units	LOQ	Result	Units
CBC (Cannabichromene)	0.093	%	0.010	0.862	mg/mL
CBD (Cannabidiol)	4.758	%	0.010	44.25	mg/mL
CBDa (Cannabidiolic Acid)	ND	%	0.010	ND	mg/mL
CBDV (Cannabidivarin)	0.027	%	0.010	0.248	mg/mL
CBG (Cannabigerol)	0.057	%	0.010	0.528	mg/mL
CBGa (Cannabigerolic Acid)	ND	%	0.010	ND	mg/mL
CBN (Cannabinol)	0.028	%	0.010	0.257	mg/mL
D8-THC (D8-Tetrahydrocannabinol)	ND	%	0.010	ND	mg/mL
D9-THC (D9-Tetrahydrocannabinol)	0.194	%	0.010	1.808	mg/mL
THCa (Tetrahydrocannabinolic Acid)	ND	%	0.010	ND	mg/mL



*J. Hobgood*  
Laboratory Manager

Jamie Hobgood

02/25/2025 11:19 AM

SIGNATURE

DATE

NT = Not tested, ND = Not detected; LOQ = Limit of Quantitation; <LOQ = Detected; >ULOL = Above upper limit of linearity; CFU/g = Colony forming units per 1 gram; TNTC = Too numerous to count

This product has been tested by CannaBusiness Laboratories using validated testing methodologies and a quality system. Values reported relate only to the product tested. CannaBusiness Laboratories makes no claims as to the efficacy, safety, or other risks associated with any detected or non-detected levels of any compounds reported herein. This Certificate shall not be reproduced except in full, without the written permission of CannaBusiness Laboratories. Photo is of sample received by the lab and may vary from final packaging. The results apply to the sample as received.